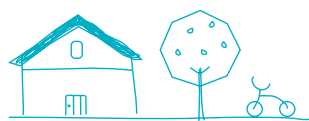


MILKWOOD



a very fine house

quilts designed by judy newman ©
australia

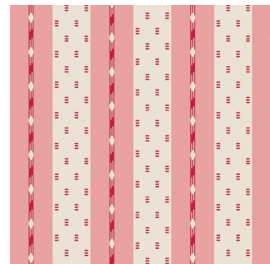
CUTTING INSTRUCTIONS

Cut the centre square at 18.5" x 18.5" in the cream feature bird fabric from the Milkwood range.



Cut borders in the pink and red stripe from the Milkwood range and put aside for later:

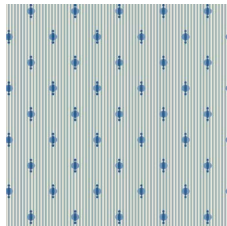
- 4.5" x 68 3/4" - cut two
- 4.5" x 76 3/4" - cut two



Featured Squares

Cut all other squares bellow at 6.5" x 6.5".

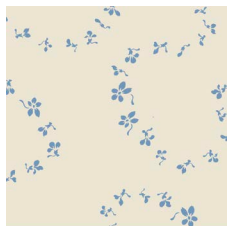
Cut 8 squares in (A):



Cut 8 squares in (D):



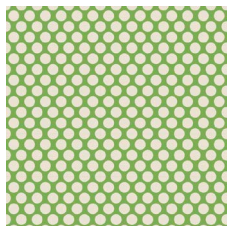
Cut 4 squares in (B):



Cut 16 squares in (E):



Cut 8 squares in (C):



Cut 4 squares in (F):



CUTTING INSTRUCTIONS CONT.

Cut 4 squares in (G):



Cut 48 further squares from the whole range (including the fabrics already used) arranged in a pleasing manner of your choice.

Cut 7 squares at 9.5" x 9.5" in the mint background bird fabric, and cut each across diagonally twice, as shown to the right. These will be your inset triangles.

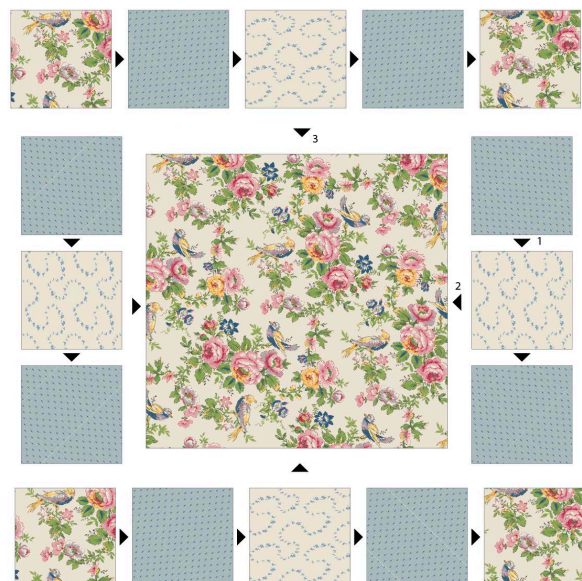
Cut 2 square at 4 3/4" and cut across the diagonal once. These 4 triangles will go the 4 corners.



CONSTRUCTION INSTRUCTIONS

STEP 1

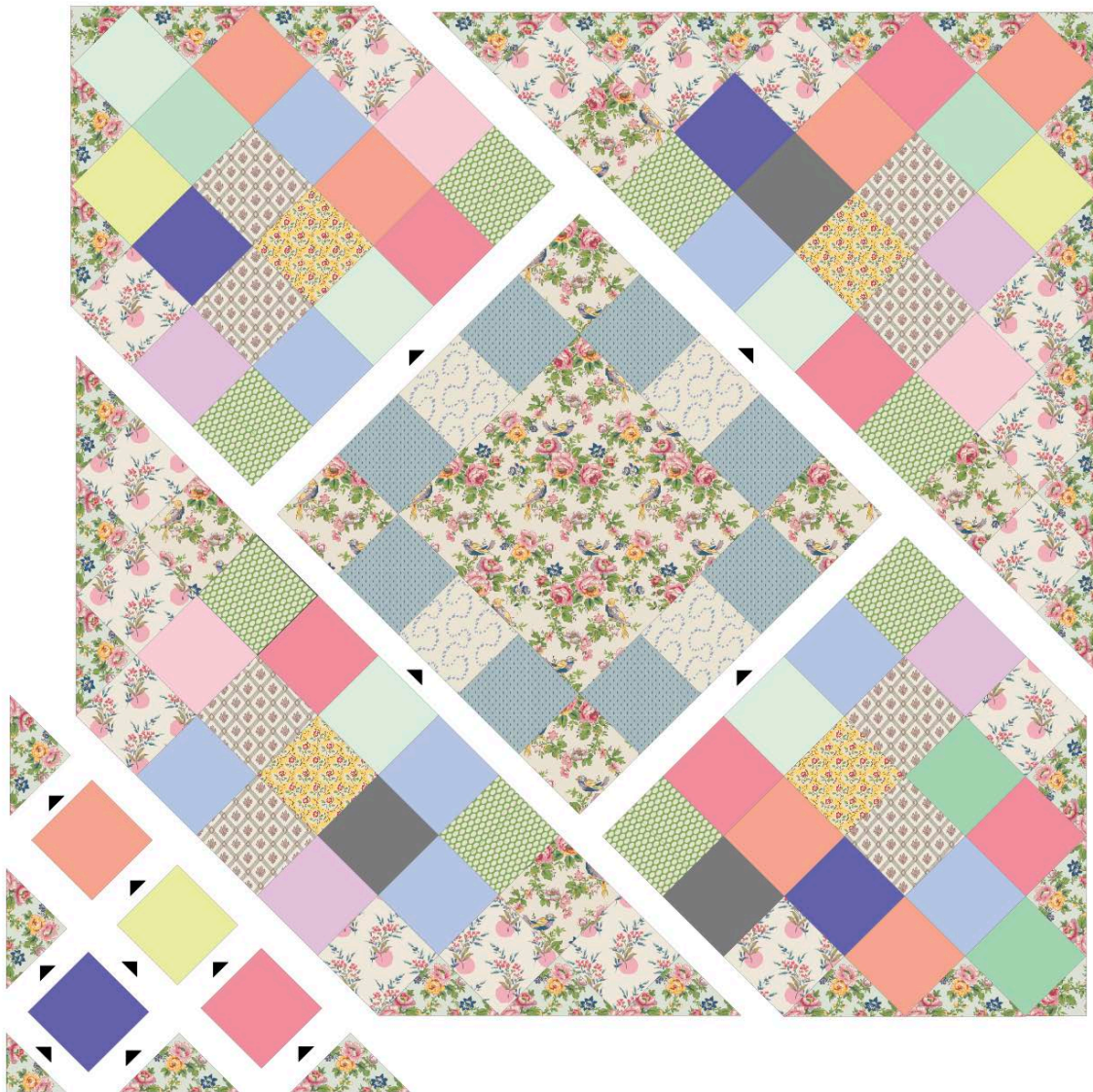
Sew squares together making 2 rows of 5 and 2 rows of 3. Sew these rows to your centre square as in the diagram below.



STEP 2

Now sew the rest of the quilt together in diagonal rows with the inset triangle at the end of each row.

Use the diagram below diagram for guidance of placement, making sure you keep the **Featured Squares** patterned fabrics from the Milkwood range where they are placed below, and the other squares randomly placed as you choose.



Sew the four corner triangles on last.

STEP 3 AND FINAL QUILT DESIGN

Sew the right and left shorter border on first, then the top and bottom longer border. Bind as desired.



MATERIALS

MILKWOOD

Quilt Size: 76" x 76"

- 90cm cream bird floral
- 75cm mint bird floral
- 1m for borders in pink stripe
- 50cm of featured fabric E
- 1 fat quarter of each of featured fabrics A, B, C, D, F and G
- 8 fat 1/8ths in your favourite fabrics from the Milkwood range for variety in the remaining squares
- 50cm of your choice for binding
- 4.2m for backing

© Judy Newman - A Very Fine House
e: averyfinehouse@gmail.com
w: www.averyfinehouse.com.au
 [judynewman](https://www.instagram.com/judynewman)

