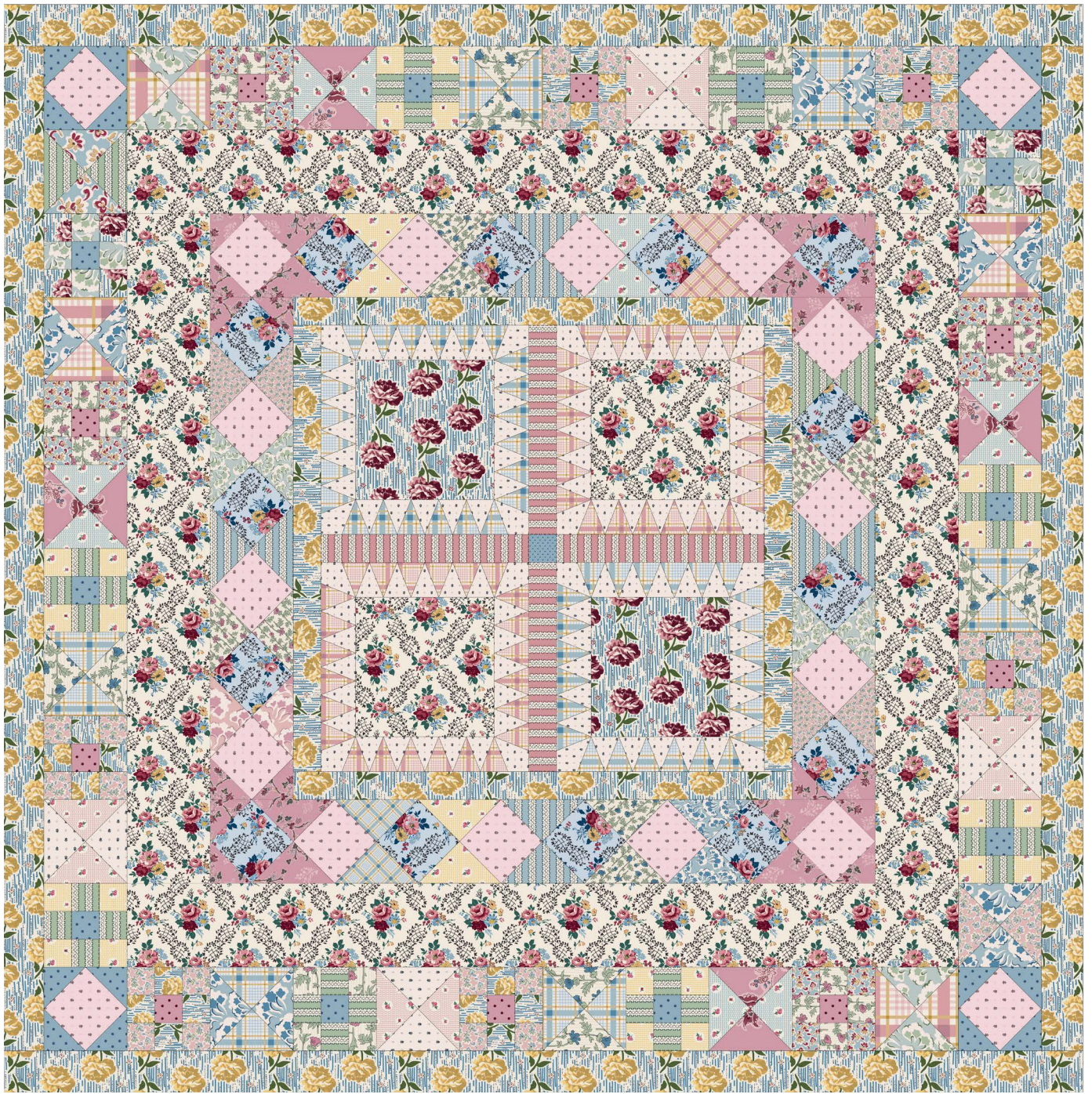




Gathering
THREAD

Forget-me-not Rose



Gathering THREAD

Forget-me-not Rose



Quilt Size: Queen Size 78" x 78" (2m x 2m)

This is a quilt I designed to celebrate the launch of my first fabric range, Forget-me-not Rose, with Devonstone Collections. I hope you enjoy the range and the quilt as much as I enjoyed designing it!

Cutting Instructions

Quilt Centre

- Cut 4 squares at $10\frac{1}{2}$ " x $10\frac{1}{2}$ "
 - Cut 2 from Penelope Cream
 - Cut 2 from Hallie Burgundy
- Cut 80 triangles from template B in Scarlett Cream
- Cut 48 triangles from template B in Mia Blue
- Cut 48 triangles from template B in Mia Pink
- Cut 16 corner pieces from template A in Scarlett Cream
- Cut 1 square at $2\frac{1}{2}$ " x $2\frac{1}{2}$ " in Margot Blue
- Cut 4 strips at $2\frac{1}{2}$ " x $15\frac{1}{2}$ " in Freya Pink, ensuring the stripes are orientated the correct way

Border 1

- Cut 2 strips at $2\frac{1}{2}$ " x $32\frac{1}{2}$ " in Hallie Yellow
- Cut 2 strips at $2\frac{1}{2}$ " x $32\frac{1}{2}$ " in Hallie Yellow

Border 2 - Square on point

- Cut 14 squares at $4\frac{3}{4}$ " x $4\frac{3}{4}$ " from Penelope Blue
- Cut 14 squares at $4\frac{3}{4}$ " x $4\frac{3}{4}$ " from Scarlett Pink
- Cut 4 squares at $7\frac{1}{2}$ " x $7\frac{1}{2}$ " from Freya Blue and cut across the diagonal twice. You will use 8 of these triangles for this border and can save the other 8 for the border 4, hour glass block
- Cut 2 squares at $7\frac{1}{2}$ " x $7\frac{1}{2}$ " from Lily and cut across the diagonal twice (see construction steps for instructions)
- Cut 8 squares at 4" x 4" from Lily and cut across the diagonal once (see construction steps for instructions)
- Cut 8 squares at $7\frac{1}{2}$ " x $7\frac{1}{2}$ " from 4 different fabrics not already mentioned for border 2 and cut across the diagonal twice (see construction steps for instructions)

Border 3

- Cut 2 strips at $48\frac{1}{2}$ " x $6\frac{1}{2}$ " from Penelope Cream across the length for no joins
- Cut 2 strips at $60\frac{1}{2}$ " x $6\frac{1}{2}$ " from Penelope Cream across the length for no joins

Border 4

- Hourglass blocks
 - Cut 18 squares at $7\frac{1}{2}$ " x $7\frac{1}{2}$ " and cut across the diagonal twice (see construction steps for instructions) from a variation of fabrics from the Forget-me-not range. You already have 8 triangles cut from border 2
- 9 patch blocks
 - Cut 10 squares at $2\frac{1}{2}$ " x $2\frac{1}{2}$ " from Margot Pink for centres of blocks
 - Cut 10 squares at $2\frac{1}{2}$ " x $2\frac{1}{2}$ " from Margot Blue for centres of blocks
 - Cut 160 squares at $2\frac{1}{2}$ " x $2\frac{1}{2}$ " from a variation of fabric from the Forget-me-not range, ensuring they are cut in groups of 4 to create the 9 patch block effect - see construction instructions for details
- Corner blocks
 - Cut 4 squares at $4\frac{3}{4}$ " x $4\frac{3}{4}$ " from Scarlett Pink
 - Cut 8 Squares at 4" x 4" and cut once across the diagonal to make 16 triangles from Margot Blue

Border 5

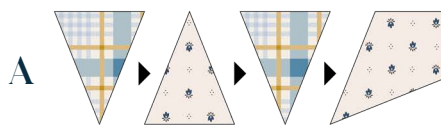
- Cut 4 strips along the width of the fabric at $3\frac{1}{2}$ ". Pattern match them together to make two strips. Then trim back to two strips at $3\frac{1}{2}$ " x $72\frac{1}{2}$ " and two strips at $3\frac{1}{2}$ " x $78\frac{1}{2}$ "

Construction Instructions

Step 1

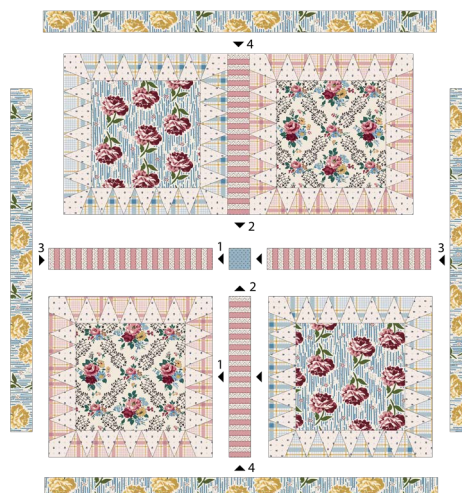
On the wrong side of the fabric, trace a line using a fabric pencil marking $\frac{1}{4}$ " from the edge - this will be your sewing line when you attach the triangle border.

Hand stitch the triangles together, as shown in diagram A. Then, pin and sew to the centre featured squares, as in diagram B.



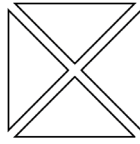
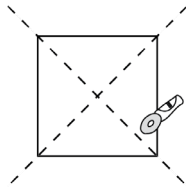
Step 2

Sew the centre together as per the diagram shown here

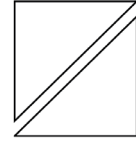
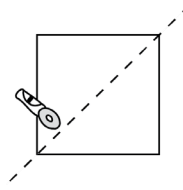


Step 3 - Border 2

Using the diagrams below, make your inset and edge triangles.

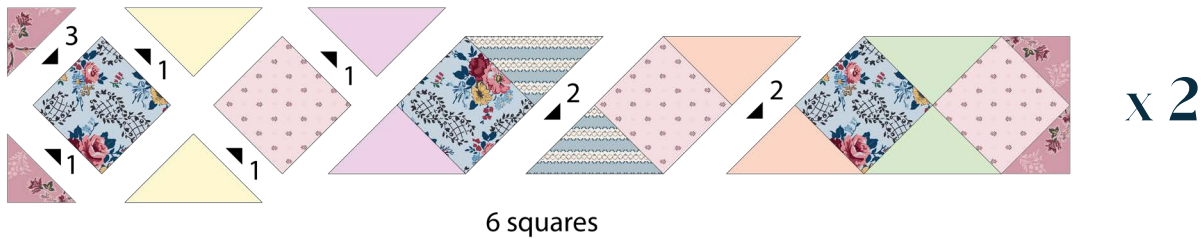


Inset Triangles



Corner Triangles - cut from
4" squares

Using a machine, sew the square on point borders together using the below as a guide for the order in which to sew. Remember to pin at the corners as you go to ensure clean points. The pastel colours are where you will place your randomised triangles cut from the Forget-me-not Rose range. Once finished, press and trim back the points that will be sticking out. Sew the two rows of 6 squares to the left and right of your quilt, then the two rows of 8 squares to the top and bottom.

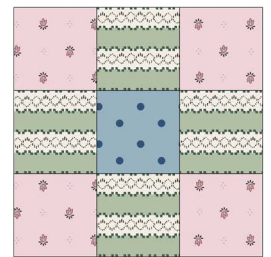
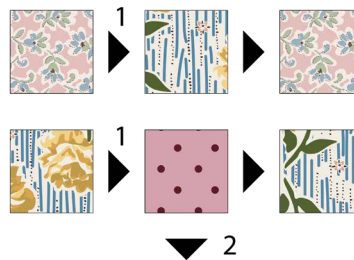


Step 4 - Border 3

Sew the two short strips (48 1/2" x 6 1/2") of Hallie Burgundy to the left and right of your quilt and the two longer strips (60 1/2" x 6 1/2") to the top and bottom. Pin before you sew.

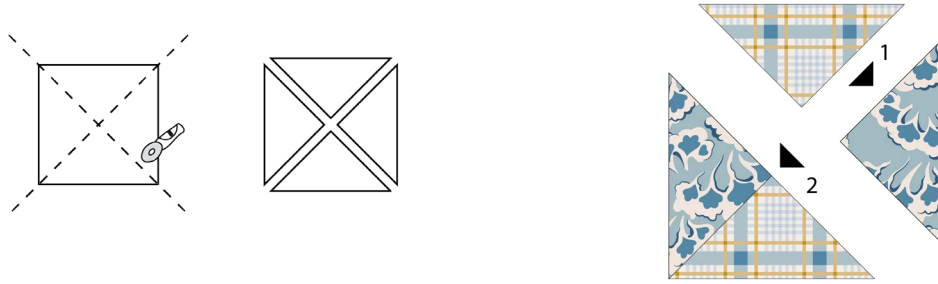
Step 5 - Border 4: 9 patch blocks

Make 20, 9 patch blocks using the construction directions to the right. Make 10 with a blue centre square and 10 with a pink centre square. These will be alternated around the quilt when you construct the final border.



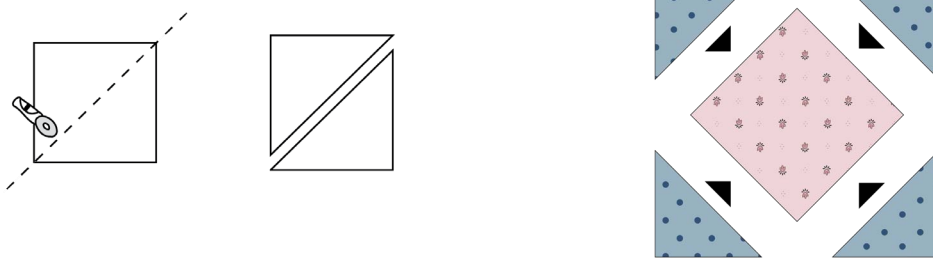
Step 5 - Border 4: Hourglass blocks

Cut your squares across the diagonal twice. Then sew your hourglass blocks together as per the diagram below. The blocks should measure $6\frac{1}{2}$ " x $6\frac{1}{2}$ ", trim back if required.



Step 5 - Border 4: Corner blocks

Cut your squares across the diagonal once. Then sew the four triangles to the four sides of the square as shown below. Trim back to $6\frac{1}{2}$ " x $6\frac{1}{2}$ ".



Step 6 - Border 4: Construction

Using the final quilt diagram on the next page, sew your final 4 borders together, alternating the blocks as shown, and then sew them to the rest of your quilt.

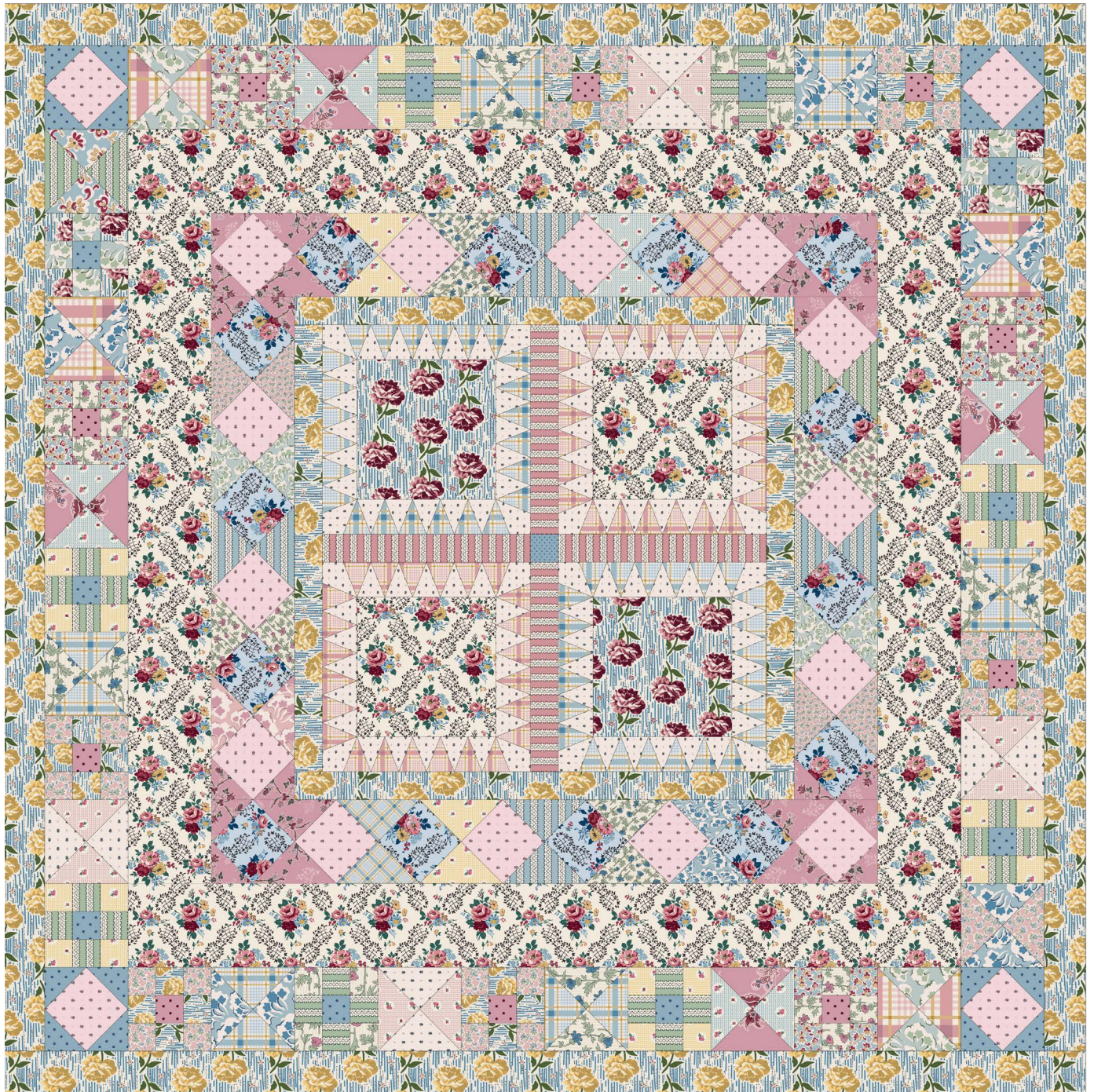
Step 6 - Border 5 and Binding

Take the two strips of $3\frac{1}{2}$ " x $72\frac{1}{2}$ " of Hallie Yellow and sew to the right and left of your quilt. Then sew the two strips of $3\frac{1}{2}$ " x $78\frac{1}{2}$ " to the top and bottom.

Bind in Freya Blue, Pink or Green.



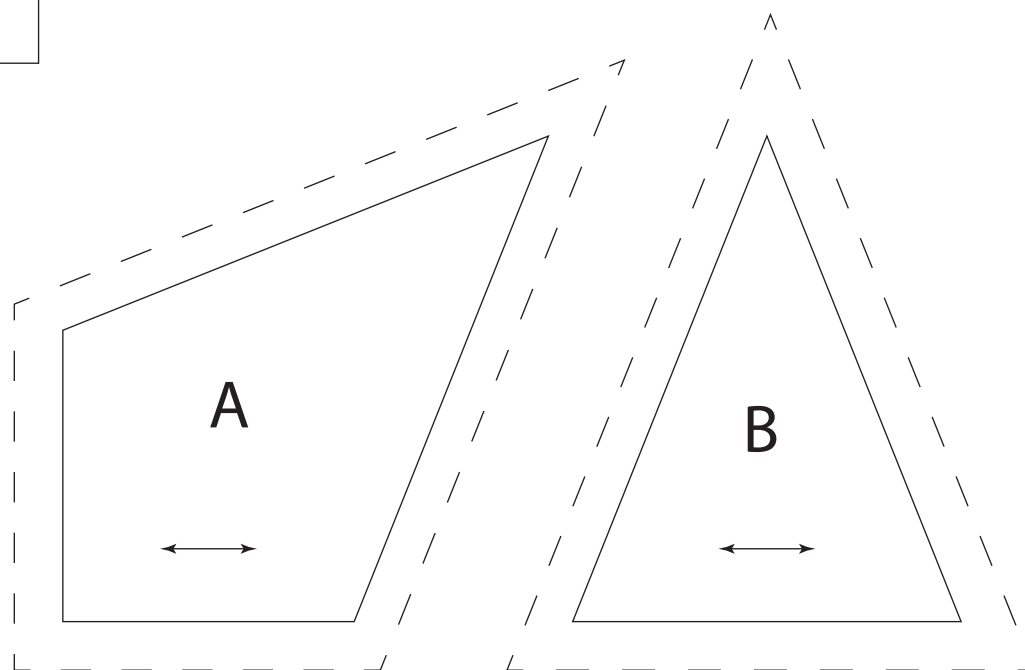
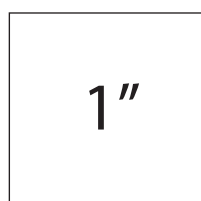
Final Quilt Layout



Templates

Cut the template plastic to the inside line of the templates. Cut out leaving a $\frac{1}{4}$ " seam allowance.

NB: Please print this page at 100% (actual size)



Requirements

Quilt Size: 78" x 78" (2m x 2m)

- › 1.7m (1.9 yards) Penelope Cream for unjoined borders.
- › 30cm (.4 yards) of Hallie Burgundy for centre feature and scraps
- › 80cm (.9 yards) of Hallie Yellow for border 1 and border 5 - your final borders will have joins
- › 30cm (.4 yards) Penelope Blue for squares
- › 40cm (1/2 yard) of Penelope Blue for squares
- › 30cm (.4 yards) Lily
- › 30cm (.4 yards) Scarlett Cream
- › Fat 1/4 of Freya Pink
- › Fat 1/8th of Margot Blue
- › Fat 1/8th of Margot Pink
- › Fat 1/8th of the rest of the range for scrappy blocks
 - › Ava Green, Blue and Pink, Mary Blue and Pink, Freya Green and Blue, Evie Blue, Yellow and Pink, Camilla Blue and Pink, Mia Blue and Pink

 gathering-thread.com

 hello@gathering-thread.com

 [gathering_thread](https://www.instagram.com/gathering_thread)



Forget-me-not Rose
© Emma Mary Newman