

# Eiderdown Quilt



By Judy Newman



Featuring fabric from:  
**EIDERDOWN**

DEVONSTONE  
collection

2  
green  
zebras

# Eiderdown Quilt



By Judy Newman

Machine pieced and hand appliqued.

Quilt Size: 67.5" x 67.5" (1.7m x 1.7m)

This quilt has been made using my new range of fabric, Eiderdown by Devonstone Collections. Reminiscent of the eiderdown on my bed when I was a child, the colours and patterns have always been nostalgic and comforting to me. I hope you enjoy making Eiderdown too.

## INSTRUCTIONS

### STEP 1 - BACKGROUNDS

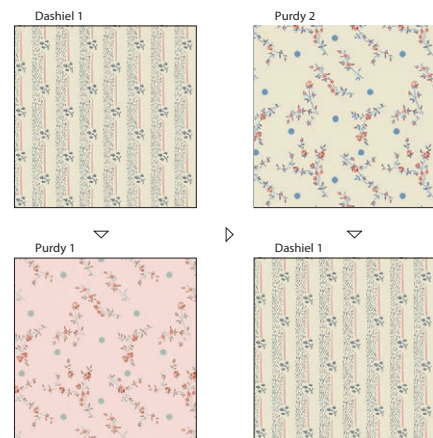
First cut the background fabrics as follows

Cut 25 squares, 7<sup>1</sup>/<sub>2</sub>" x 7<sup>1</sup>/<sub>2</sub>", in Purdy 1

Cut 25 squares, 7<sup>1</sup>/<sub>2</sub>" x 7<sup>1</sup>/<sub>2</sub>", in Purdy 2

Cut 50 squares, 7<sup>1</sup>/<sub>2</sub>" x 7<sup>1</sup>/<sub>2</sub>", in Dashiell 1

Join into a four patch as show to the right.  
Make 25 in total. Press flat, locking your seams at the back.



### STEP 2 - DRESDENS

You will need to make 41 complete dresdens, 16 half dresdens and 4 quarter dresdens.

Each dresden will be made using two colours, alternating the two fabrics.

I have used the following fabrics in my dresdens:  
Josephine in green & pink, Eider, Hadlow, Lilith in pink & blue, Talbot in pink, blue and cream and Lucie.

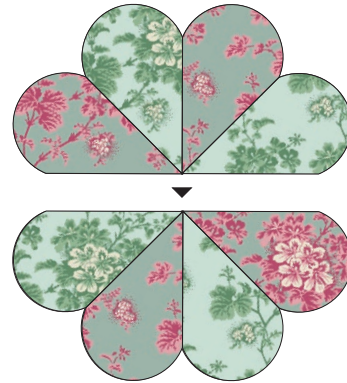


### STEP 3

Cut out shapes A and B using mylar or template plastic.

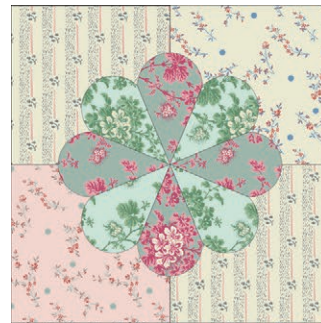
Trace around the shapes on the wrong side of the fabric and add seam allowance when cutting out.

Join your dresdens together in two halves, then sew together across the middle. Press on both sides.



### STEP 4

Now, applique around the curved edges of the 25 full dresdens to the centre of the 25 four patch blocks. Then, trim each of the four patch blocks back to 14" x 14", centring the dresdens and turning the seam under  $\frac{1}{4}$ " on the curved edge.



Finally, sew the 25 four patch blocks together as show in this diagram.



**STEP 5**

Take the remaining 16 dresdens and sew them in the gaps, making sure the curved edges touch the adjoining curve.

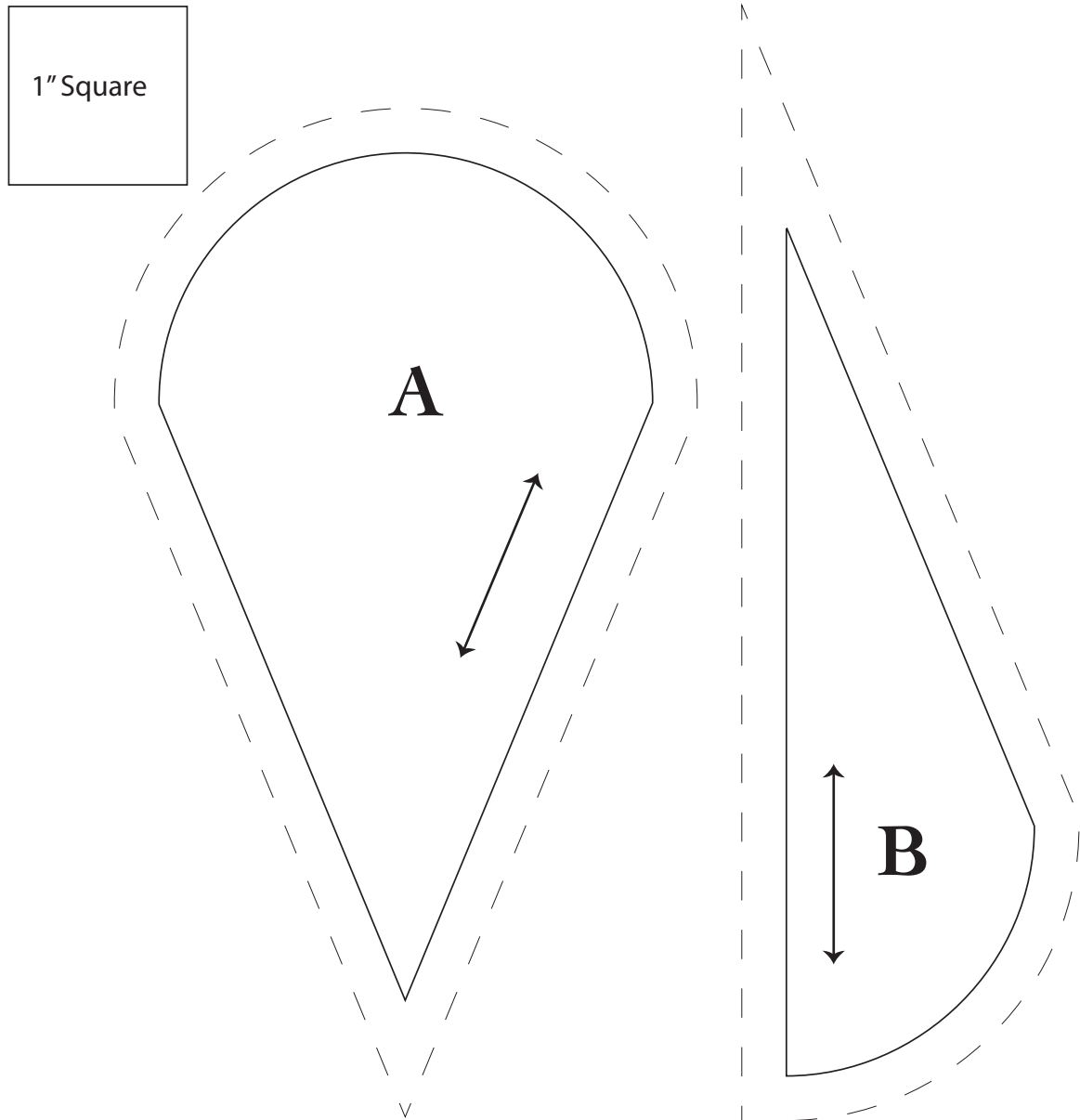
Finally, sew on the 12 half dresdens and the 4 corner dresdens to complete the top

**FINISHED QUILT**

You can add a border to this quilt if you wish.



## TEMPLATES



## MATERIALS

- 35cm each of the dresden fabrics
- 1m Purdy 1
- 1m Purdy 2
- 2m Dashiel 1
- Template plastic
- 50cm binding in Dashiel 2

This pattern is not to be reproduced or redistributed without permission from the designer.

